

SPECIFICATIONS

Main unit		
Control panel		5 inch TFT LCD WVGA Colour Touch panel
Memory		Standard: 2.0GB RAM
Interface connection	NETWORK	Standard: 1000Base-T/100Base-TX/10Base-T, Wireless LAN (IEEE 802.11 b/g/n); Optional: NFC
	OTHERS	Standard: USB 2.0 (Host) x2, USB 2.0 (Device) x1; Optional: Copy Control Interface
Paper capacity (A4, 80gsm)		
Paper source (A4, 80gsm)		Standard: Two 550-sheet paper cassettes 100-sheets Multi Purpose Tray Optional: Two 550-sheet paper cassettes (CASSTTE FEEDING UNIT-AP1) Maximum: 2,300 Sheets
Paper output capacity (A4, 80gsm)		Standard: 250 Sheets With Inner Finisher: 600 sheets
Supported media sizes	Cassette 1:	A4, B5, A5R Envelopes: ISO-C5 Custom Size: 139.7 mm x 182 mm to 297 mm x 215.9 mm
	Cassette 2:	A3, B4, A4, B5, A4R, A5R Envelopes: No.10 (COM10), Monarch, DL Custom Size: 139.7 mm x 182 mm to 304.8 x 457.2 mm
	Cassette 3/4 (CASSETTE FEEDING UNIT-AP1):	A3, B4, A4, A4R, B5R, B5, A5R Custom Size: 139.7 mm x 182 mm to 304.8 mm x 457.2 mm
	Multi-purpose tray:	A3, B4, A4, A4R, B5R, B5, A5, A5R, SRA3 Custom Size: 98.4 mm x 139.7 mm to 320 mm x 457.2 mm.
Supported media weights		Cassette 1,2: 52 to 220/gsm Cassette Feeding Unit: 52 to 220gsm Multi-purpose tray: 52 to 256gsm (coated paper), 52 to 300gsm (heavy paper)
Warm-up time		From Power On: 30 Seconds or Less
Installation space (W x D)		Basic: 978 mm x 1,117 mm (when attach with DADF-AV1 + Multi-purpose tray extension extended + Cassette open)
Weight		Approx. 69.8kg including toner (when attach with DADF-AV1)

Print specifications	
Printing method	Colour Laser Beam Printing
Print speed (BW/CL)	20 ppm (A4), 15ppm (A3)
Print resolution	600dpi/600dpi, 1200dpi/1200dpi
Page description languages	Standard: UFR II, Option: PCL 6, Adobe PS3
Direct print	Direct printing available from USB memory key. Supported file types: TIFF, JPEG, PDF abd XPS.
Fonts	PCL fonts: 93 Roman, 10 Bitmap fonts, 2OCR fonts, Barcode fonts*. PS fonts: 136 Roman. *Require optional BARCODE PRINTING KIT-D1
UFR II:	Windows Vista/Server 2008/Windows 7/Server 2008 R2/Windows 8/Server 2012/Windows 8.1/Server 2012 R2/Windows 10/Server 2016, MAC OS X (10.7.5 or later), Linux
PCL:	Windows Vista/Server 2008/Windows 7/Server 2008 R2/Windows 8/Server 2012/Windows 8.1/Server 2012 R2/Windows 10/Server 2016,
PS:	Windows Vista/Server 2008/Windows 7/Server 2008 R2/Windows 8/Server 2012/Windows 8.1/Server 2012 R2/Windows 10/Server 2016, MAC OS X (10.7.5 or later),
PPD:	MAC OS 3.1 or later, MAC OS X (10.3.9 or later), Windows Vista/Windows 7/Windows 8/Windows 10

Environmental specifications	
Power source	220-240 V (+10%), 50/60 Hz (+2 Hz), 4.0 Amp
Power consumption	Maximum: Approx. 1.5 kW. Standby: Approx. 33.6 Wh *Reference Value. Sleep mode: Approx. 2 W (Wireless LAN power save mode: OFF), 1 W (Wireless LAN power save mode: ON)

Paper Supply Option - CASSETTE FEEDING UNIT-AP1	
Paper Capacity (A4, 80g/m)	1,100 sheets
Power Source	From the Main Unit
Dimensions (W x D x H)	565 mm x 615 mm x 248 mm
Weigh	Approx. 16 kg

Other Optional Accessories	
PLATEN COVER TYPE W, DADF-AV1, INNER 2WAY TRAY-J1, INNER SHIFT SORTER-A1, INNER FINISHER K1, COPY TRAY-JS, UTILITY TRAY-B1, READER HEATER-L1, MAIN BODY HEATER UNIT-A1 COPY CARD READER-F1, COPY CARD READER ATTACHMENT-H2, SEND PDF SECURITY FEATURE SET-E1,BARCODE PRINTING KIT-D1, COPY CONTROL, INTERFACE KIT-D1, NFC KIT-D1, ADF ACCESS HANDLE-A1	



Ultra Sound



Canon IRC 3020



X-Ray

Canons DICOM solution

Plain paper
printing solution
for
medical images.
As per IHE Guidelines

Canon
Delighting You Always

Glocal
Think GLOBAL Act LOCAL



Glocal **Canon**
Think GLOBAL Act LOCAL
Delighting You Always

Glocal Digital Pvt Ltd
H.No: 42-785/5,
Andal Nagar, Moula Ali,
Ecil, Hyderabad-500040.
GST:- 36AAGCG3222M2ZJ
📧 www.glocaldigital.co.in
✉ support@glocaldigital.co.in

For More Information Please Contact:
Rakesh lakka (Director)
9849807736, 7893453372
Ofc No: 040-27137736

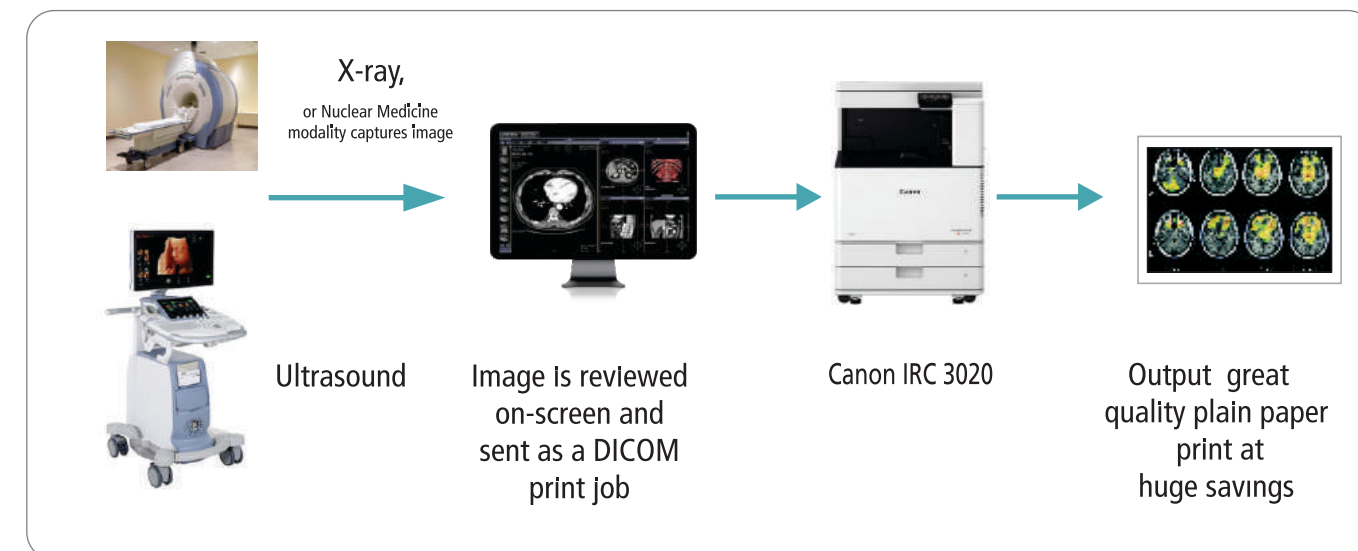
Enhance patient consultation experience, save on costs and go green.

With hospitals and clinics seeking cost-effective ways to produce good quality prints that physicians can use for treatment planning and consultation, Canon's DICOM plain paper print solution is ideal for sharing radiological images with physicians and patients.

DICOM (Digital Imaging & Communications in Medicine) is the primary international standard for the handling, storing, printing and transmission of medical images and related information. The solution allows users to print medical images such as X-ray, Ultrasound and Nuclear Medicine on a range of media and in colour, for purposes such as medical discussions and patients' records.

Traditional DICOM medical imaging printers print on speciality film or use solid-ink imaging. In contrast, Canon multifunction printers can print on plain paper and offer multiple advantages.

REDUCE
OUTPUT COSTS
BY UP TO
50%



Guided by customer behaviour, not just technology

Canon is known for its suite of advanced products for transforming paper-based business systems into automated processes that improve business workflow and productivity. However, in the Indian healthcare scenario, digital imaging alone is not a practical solution because it ignores the people involved – physicians and patients. Referring physicians want physical images in their hands, without having to search databases, deal with DVDs, or have their bandwidth choked by huge image files. To fully comprehend diagnostic reports and explain them to patients, physicians want high quality images they can review and share easily. This is where Canon DICOM solution comes in.



Easy integration and simplified workflow

Canon DICOM solution is compatible with the DICOM 3.0 standard. It fits seamlessly into existing workflows, and there is no need for special training as it is operated just like a film printer. In fact, because you eliminate the need for special printing, handling, storage, transportation, and other infrastructure needed for film, you actually simplify your work process and that of your referring physicians. This leads to faster results and higher acceptance.

Optimised for excellent image quality

The solution receives DICOM images from a modality, and then prints them on Canon IRC 3020 printer. To achieve near film quality prints with depth and detail, the hardware and software have been optimised for medical imagery, giving you deep, saturated blacks. You can further fine-tune print quality through the simple user interface.

Extraordinary savings

Canon DICOM solution helps you reduce medical image printing costs by up to 50%, compared to traditional film-based solution. From start to finish, working with film is expensive and labour-intensive. Replacing film with paper allows you to share images with minimal expense. You also save on compliance and other environmental costs associated with using chemical-based film.

No investment, just pay per print

With Canon's DICOM solution, you just pay for what you print. That means no heavy investments in expensive medical image printers, and no ongoing expenditure on consumables.

Better record-keeping

Paper prints are easier to store and transport than film, which also makes them more accessible. Paper can be annotated more easily. Finally, paper prints have a longer life, since they are less light-sensitive compared to film.

Environmentally safe

Because Canon DICOM printing reduces the need for chemical-based film processing and equipment, and because the prints can be shredded and recycled, it will help you minimise the environmental impact of your daily operations.

Dedicated customer service and support

As part of our commitment to achieving 100% customer satisfaction, Canon DICOM printing is available with best-in-class service and support. A dedicated and qualified technical team is there to help resolve any issues that may arise with our solution.