

DIYCAM Face Recognition based Attendance Management and Temperature detection System with 7inch LCD Display

Model No :- Diycam TFWS 1



Features:

- Non-contact automatic body temperature detection, brush human face and perform high-precision infrared human temperature acquisition at the same time, fast and high effect
- Temperature measurement range 30-45 (°C) Accuracy ± 0.3 (°C)
- Automatically identify unmasked personnel and provide real-time warning
- Support mid-range temperature measurement and real-time warning of high temperature
- Support temperature data SDK and HTTP protocol docking
- Automatically register and record information, avoid manual operation, improve efficiency and reduce missing information
- Support binocular live detection

- Unique face recognition algorithm to accurately recognize faces, face recognition time <500ms
 - Support human motion tracking exposure in strong backlight environment, support machine vision optical wide dynamic $\geq 80\text{dB}$
 - Adopt Linux operating system for better system stability
 - Rich interface protocols, support SDK and HTTP protocols under multiple platforms such as Windows / Linux
 - 7-inch IPS HD display
 - IP34 rated dust and water resistant
 - MTBF > 50000 H
 - Support 10000 face comparison library and 50,000 face recognition records
 - Support one Wiegand input or Wiegand output
 - Supports fog through, 3D noise reduction, strong light suppression, electronic image stabilization, and has multiple white balance modes, suitable for various fields
- Scene demand : Support electronic voice broadcast (normal human body temperature or super high alarm, face recognition verification results)

Specification:

Model: - Diycam TFWS 1	
Hardware	
Chipset	Hi3516DV300
System	Linux Operation System
RAM	16G EMMC
Image Sensor	1/2.7" CMOS
Lens	4.5 mm
Camera Parameter	
Camera	Binocular Camera Support Live Detection
Effective Pixel	2 Mega Pixel , 1920*1080
Min Lux	Color 0.01 Lux @F1.2 (ICR) : B/w 0.0001 Lux @F1.2
SNR	≥50db (AGC OFF)
WDR	≥80db
Height	1.2-2.2 M, angle adjustable
Distance	0.5-3 Meters
View Angle	Vertical ±30 degree
Reco . Time	<500ms
Function	Support 10000 faces database and 50000 records
Temperature	
Range	30-45 (°C)
Accuracy	±0.3 (°C)
Best Distance	0.3- 0.8 Meters
Response Time	<300ms
Interface	
Internet interface	RJ45 10M/100M Ethernet
Weigand Port	Support input/ output 26 & 34
Alarm Output	1 channel relay Output
USB port	1 USB port (can be connected to ID identifier)
General	
Power Input	DC 12V/3A
Power Consumption	20W(MAX)
Working Temperature	10°C ~ +50°C
Humidity	5~90%, no condense
Dimension	123.5(W) * 45.5(H) *266(L)mm
Weight	1.9 KG
Column Aperture	27mm

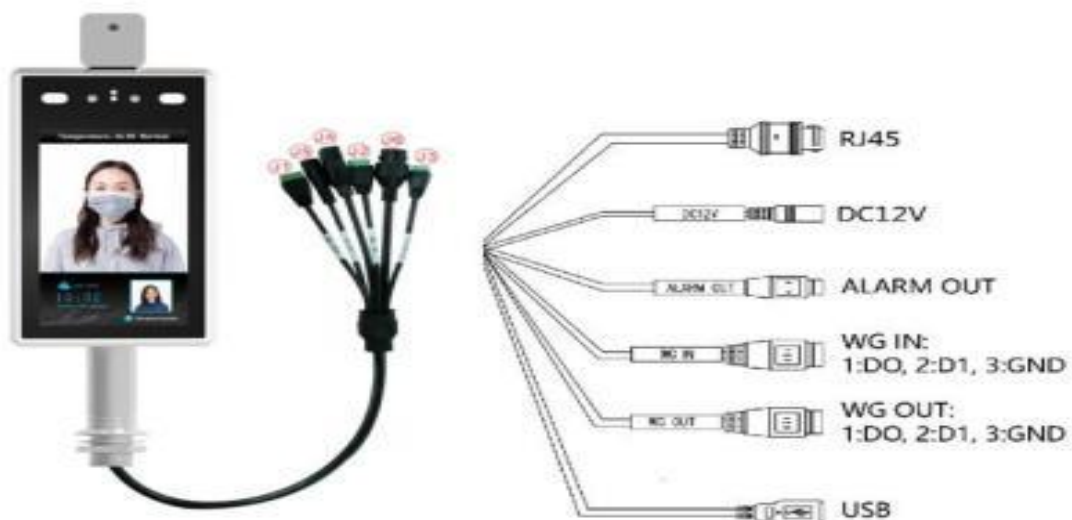
Precautions:

The temperature measuring device should be used in a room with a room temperature between 10 °C -40 °C. Do not install the temperature measuring device under the vent, and ensure that there is no heating source within 3 meters;

Personnel entering the room from a cold outdoor environment will affect the temperature measurement accuracy. The forehead temperature test should be performed after the forehead is unobstructed for three minutes and the temperature is stable;

The temperature read by the temperature measuring device is the temperature in the forehead area. When there is water, sweat, oil or thick makeup on the forehead or the elderly have more wrinkles, the read temperature will be lower than the actual temperature. Make sure there is no hair or clothing covering this area

Interface specification

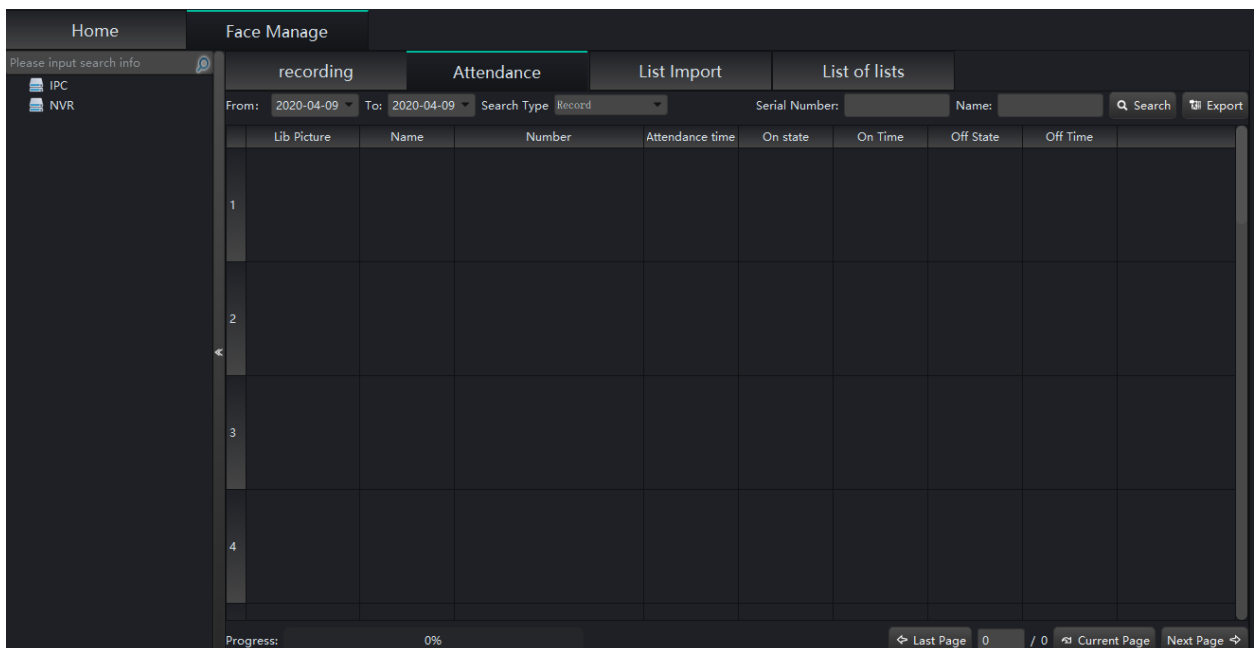


Software Screen shot

Home



Attendance



Device Manager

The screenshot shows the 'Device Manager' interface. At the top, there are tabs for 'Home' and 'Device Manage'. Below the tabs, there is a search bar and a 'Manage device: 0' indicator. The main area contains a table with columns for 'IP' and 'Device name'. The table has 8 rows, numbered 1 to 8. Below the table, there is a 'Searching...' section with a search bar, 'Add device', and 'Add All' buttons. There are also fields for 'User Name: admin' and 'Password:'. At the bottom, there is another table with columns: 'Select', 'IP', 'Device Type', 'Port', 'MAC', 'Channel number', and 'Sub type'. This table also has 8 rows, numbered 1 to 8.

Face Manger

The screenshot shows the 'Face Manger' interface. At the top, there are tabs for 'Home' and 'Face Manage'. Below the tabs, there are sub-tabs for 'recording', 'Attendance', 'List Import', and 'List of lists'. The 'recording' sub-tab is active. Below the sub-tabs, there is a search bar and an 'Export' button. The main area contains a table with columns: 'Lib Picture', 'Snap Picture', 'Name', 'Number', 'List Mode', 'Temperature', 'Time', and 'Information'. The table has 4 rows, numbered 1 to 4. At the bottom, there is a progress bar for 'Export Picture Progress: 0%' and a checkbox for 'Abnormal temperature'. There are also navigation buttons for 'Last Pag', 'Current Pa', and 'Next Pag'.

Data Base Management

Home | Face Manage

recording | Attendance | List Import | List of lists

White List Black List VIP List

Never Expires Validity period: 2020-04-09 00:00:00 To: 2020-04-09 23:59:59

List Import: Select Folder

Add List

Tips: Name and number cannot be empty !

Name:

Serial Number:

Gender: Male

Telephone:

Remarks:

Device Name	Upgrade Pos	State
1		
2		
3		
4		
5		

Home | Face Manage

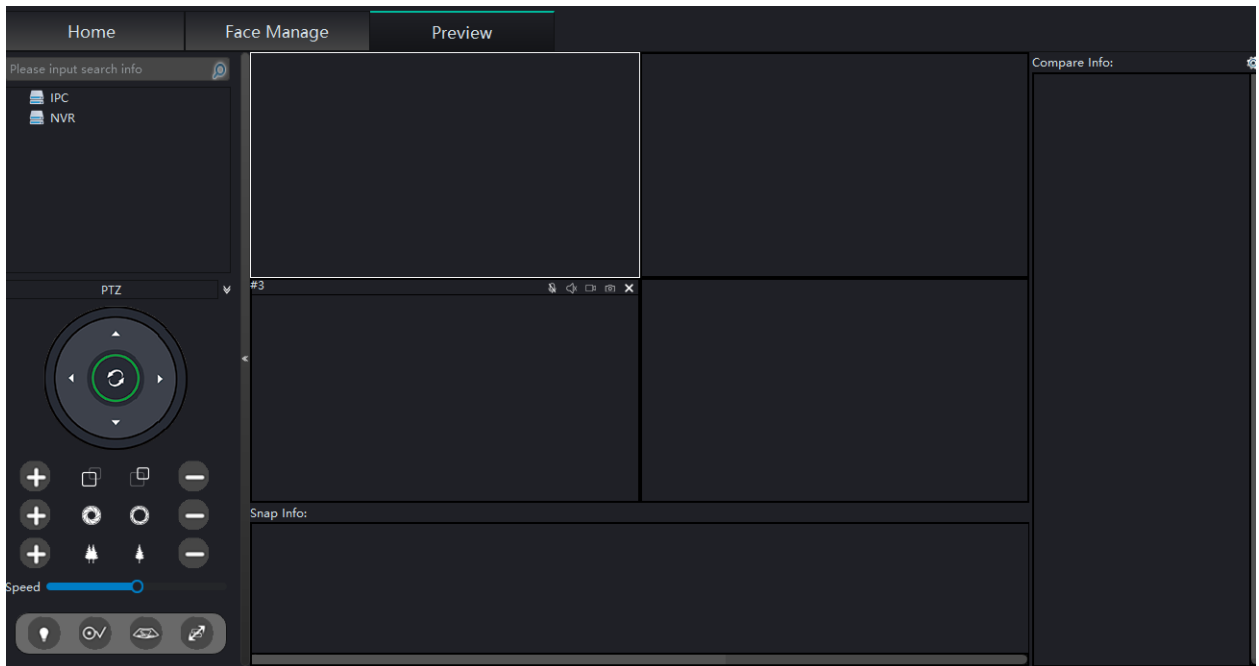
recording | Attendance | List Import | List of lists

WhiteList BlackList VIPList

Name:

Select	Lib Picture	Name	Number	Validity period	State
1					
2					
3					

Preview



Replay

